



# Qlik DataMarket Connector Installation and User Guide

*Qlik DataMarket Connector Version 1.0*

*Newton, Massachusetts, November 2015*

*Authored by QlikTech International AB*

Copyright © QlikTech International AB 2015, All Rights Reserved Under international copyright laws, neither the documentation nor the software may be copied, photocopied, reproduced, translated or reduced to any electronic medium or machine-readable form, in whole or in part, without the prior written permission of QlikTech International AB, except in the manner described in the software agreement.

QlikTech®, Qlik® and QlikView® are registered trademarks of QlikTech International AB. All other company names, products and services used herein are trademarks or registered trademarks of their respective owners.

---

---

## Contents

1	Qlik DataMarket Connector .....	4
2	Install the Qlik DataMarket Connector .....	5
2.1	System requirements .....	5
2.2	Installing the Qlik DataMarket Connector .....	5
3	Create a DataMarket connection .....	5
4	Select and load data .....	7
5	Integrating Qlik DataMarket sets and data from other sources ...	8
6	Locate the DataMarket connector log file .....	8

---

# 1 Qlik DataMarket Connector

The Qlik DataMarket Connector enables QlikView to efficiently load data into a QlikView application from an extensive collection of up-to-date and ready-to-use data from external sources offered in the Qlik DataMarket. Qlik DataMarket provides current and historical weather and demographic data, currency exchange rates, as well as economic and societal data.

The major categories of Qlik DataMarket are:

- **Business:** The most relevant data on firms and establishments, both locally and nationwide.
- **Demographics:** Detailed population data for North America, Europe and the rest of the world.
- **Weather:** Current and historical weather conditions for major locations and more than 2500 cities around the world.
- **Currency:** Foreign exchange rates for major world currencies and more than 160 currencies worldwide, updated daily.
- **Society:** Major socioeconomic data on wages, unemployment and poverty.
- **Economy:** Major economic indicators featuring data on GDP, prices, education and environment.

Some Qlik DataMarket data is available for free. Data in the Essentials package is available for subscription fees. The data available in the Essentials package depends on the type of license installed.

Qlik DataMarket data can be examined separately or integrated with your own data. Augmenting internal data with Qlik DataMarket can often lead to richer discoveries.

Qlik DataMarket data is current with the source from which it is derived. The frequency with which source data is updated varies. Weather and market data is typically updated at least once a day, while public population statistics are usually updated annually. Most macro-economic indicators, such as unemployment, price indexes and trade, are published monthly. All updates usually become available in Qlik DataMarket within the same day.

Data selections in QlikView are persistent so that the latest available data is loaded from Qlik DataMarket whenever the data model is reloaded.

Most Qlik DataMarket data is global and country-specific. For example, world population data is available for 200+ countries and territories. In addition, Qlik DataMarket provides various data for states and regions within the United States and European countries.

---

## 2 Install the Qlik DataMarket Connector

### 2.1 System requirements

Version 1.0 of the Qlik DataMarket Connector runs only on systems with 64-bit processors. It can be installed on 64-bit systems that run QlikView. Those systems include:

- Microsoft Windows Server 2008 x64 Edition
- Microsoft Windows Server 2008 R2
- Microsoft Windows Server 2012
- Microsoft Windows Server 2012 R2
- Microsoft Windows 7
- Microsoft Windows 8.1
- Microsoft Windows 10

The Qlik DataMarket Connector for QlikView is designed to work with the same web browsers as QlikView.

### 2.2 Installing the Qlik DataMarket Connector

1. Download the `QlikDataMarketConnector_setup.exe` file from the Qlik download site.
2. Run the `QlikDataMarketConnector_setup.exe`.

The Qlik DataMarket Connector InstallShield Wizard sets up the installation environment and completes the installation.

The connector is then available from QlikView with the name "QvDataMarketConnector.exe."

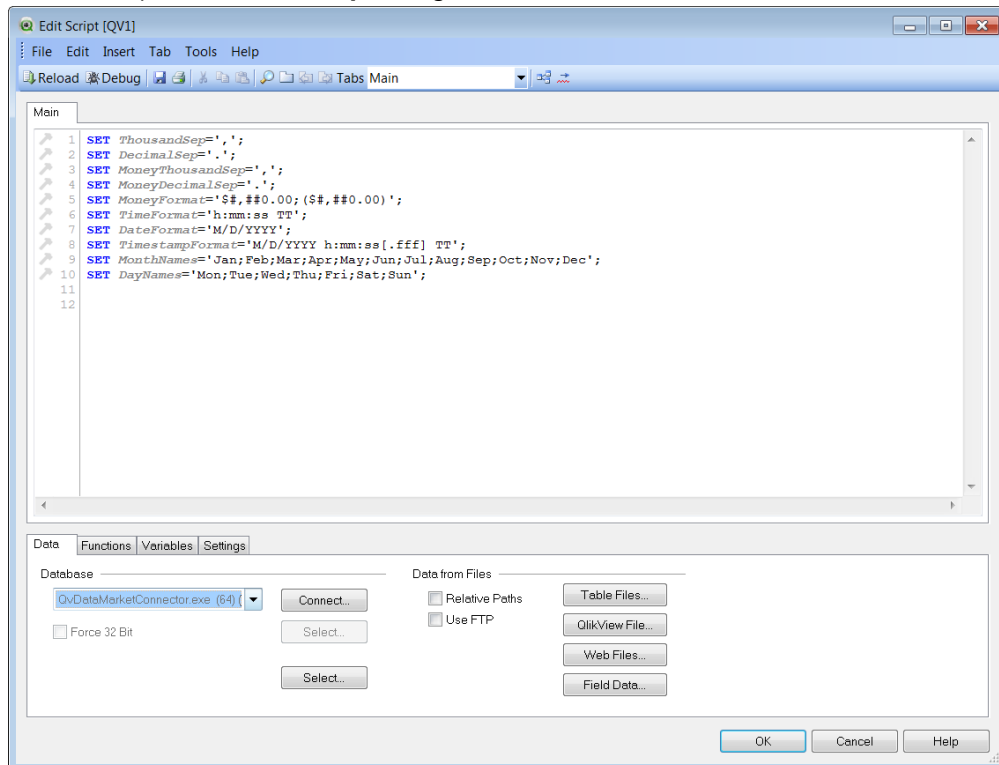
3. Open the QlikView application.

## 3 Create a DataMarket connection

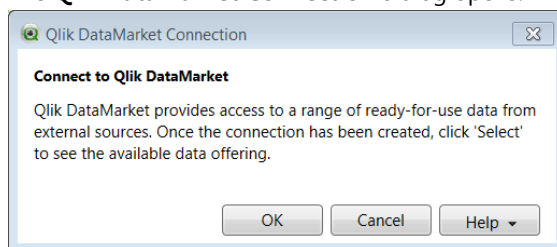
QlikView applications connect to data sources through the Script Editor.

1. Open a new or existing QlikView application.
2. Click **Edit Script...** on the **File** menu in the main QlikView window.

3. Select QvDataMarketConnector.exe from the drop-down list next to **Connect...** on the **Data** tab in the lower part of the **Edit Script** dialog.



4. Click **Connect...**  
The **Qlik DataMarket Connection** dialog opens.



5. Click **Help > Update License...** to add or update your DataMarket license.  
This step is optional if you have already entered a license and do not need to update it or if you do not have a license. You can access some DataMarket data without a license. Some data is restricted, however, and requires a license. The data that requires a license is marked **Premium** in the selection dialogs.

There are two ways to enter a license. If you choose the **Connect and get license** option in the **Update License** dialog, you enter your license key and control number to receive a valid license from a Qlik license server. If your installation site has restricted Internet access and you cannot reach the Qlik license server, select **Enter license text** and paste the text required to create and install the license. Your sales consultant can send you the full license text required to create and install the license.

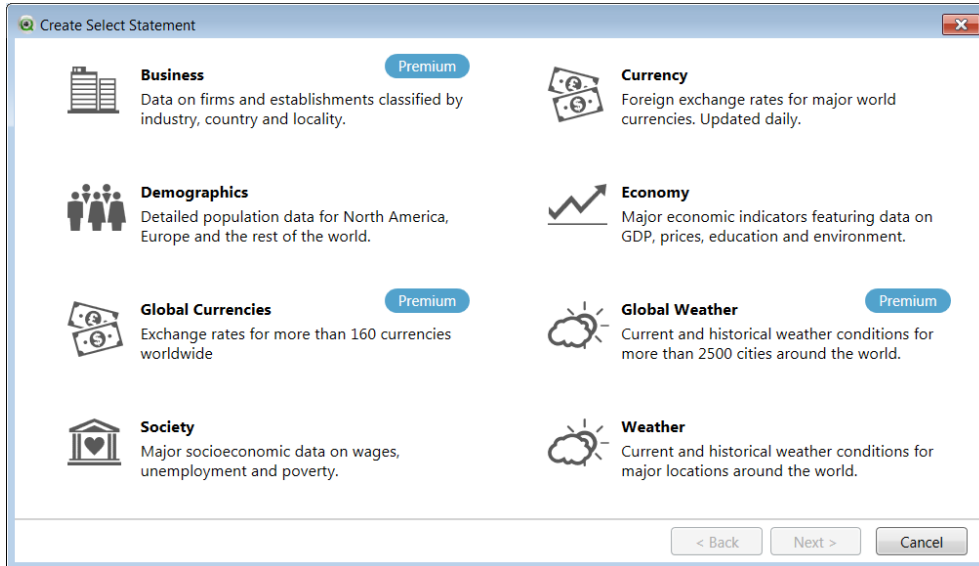
**Note: If you have restricted Internet access, you will not be able to reach the Qlik Datamarket server. To gain access, you must add the Qlik DataMarket domain to a white-list of allowable domains. The DataMarket domain is `datamarket-api.qlik.com`.**

6. Click **OK** to enter the connection script in the **Edit Script** dialog.


## 4 Select and load data

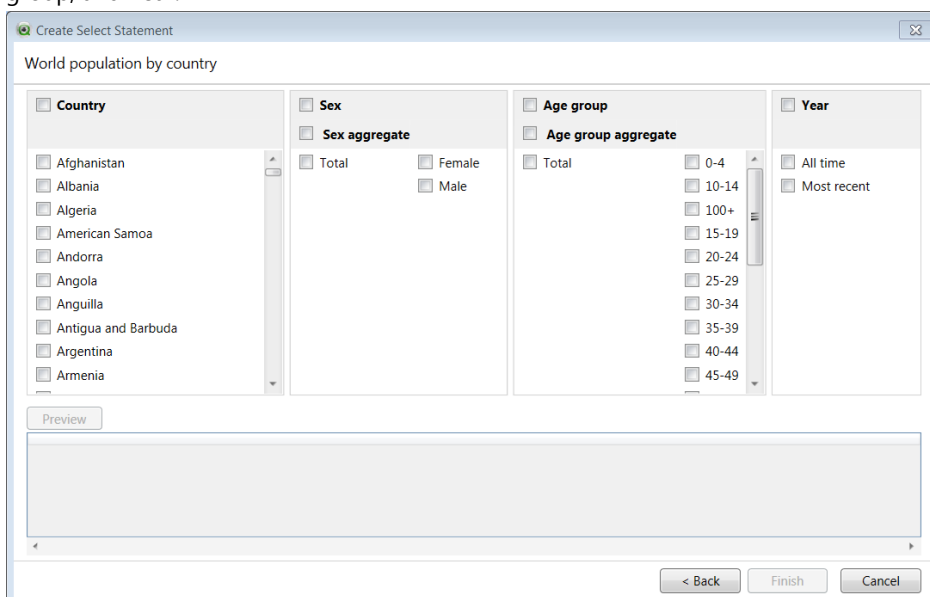
Once a connection to Qlik DataMarket has been established, you can select data and load it into a QlikView application.

1. Click the enabled **Select...** on the **Data** tab in the lower part of the **Edit Script** dialog. The **Edit Script** dialog has two **Select...** buttons when the DataMarket Connector has been connected but only the bottom button is enabled.
2. Select a data category in the **Create Select Statement** dialog.



**Note: Categories and subcategories labeled Premium are part of the Essentials package. To select Premium subcategories, you must have supplied a license.**

3. Select a subcategory of data from the next panel in **Create Select Statement** dialog. Clicking the  icon next to each subcategory description displays the metadata of the subcategory's dataset. Selecting the subcategory creates a connection to that specific data collection.
4. Select at least one filter from each field in the **Create Select Statement** dialog. Each field is identified by a header column. In the example below, the fields are Country, Sex, Age group, and Year.



---

Each field contains filters that enable you to filter the data according to your specific requirements and to limit the amount of data loaded. A field can contain a single set of filters, or it can contain multiple hierarchical columns of filters. For example, in World population by country data set above, the Country field contains a single set of filters and the Sex and Age group fields contain a hierarchy of two columns.

Selecting the field name (for example, Country) causes the entire block of filters to be selected.

A selection is required in each field. You can select individual filters, or you can select a field name (for example, Country) to select the entire block of filters. After you have made selections from all the fields, the preview panel displays the accumulated selection.

The **Preview** button becomes active when a filter has been selected from all fields.

5. Click **OK** when you are finished making your selections.  
The SELECT script to load the data is then inserted in the **Edit Script** dialog.
6. Select **Reload** to load the data.
7. Select the fields to include from the Available Fields in the **Sheet Properties** dialog.

## 5 Integrating Qlik DataMarket sets and data from other sources

QlikView integrates Qlik DataMarket data as it is added in the **Edit Script** dialog. As data is selected from multiple DataMarket sets and other sources, such as files and databases, QlikView detects associations between tables and incorporates them in the data model.

Not all associations are valid. If field names need to be changed to create associations or remove synthetic keys, they can be changed in the script after it has been inserted in the **Edit Script** dialog. Aliases can be created for DataMarket field names in the same way they are created for fields from other data sources—using the **alias** statement or the **as** specifier. For example:

```
LOAD "World",  
    "Region" as "World-Region",  
    "Country",  
    "Year" as "Current-Year",  
    "Agriculture, value added (% of GDP)";
```

## 6 Locate the DataMarket connector log file

The DataMarket Connector's log file is located at:

```
{ProgramData}\QlikTech\Custom Data\QvDataMarketConnector\Log
```

Where {ProgramData} is %ALLUSERSPROFILE%.